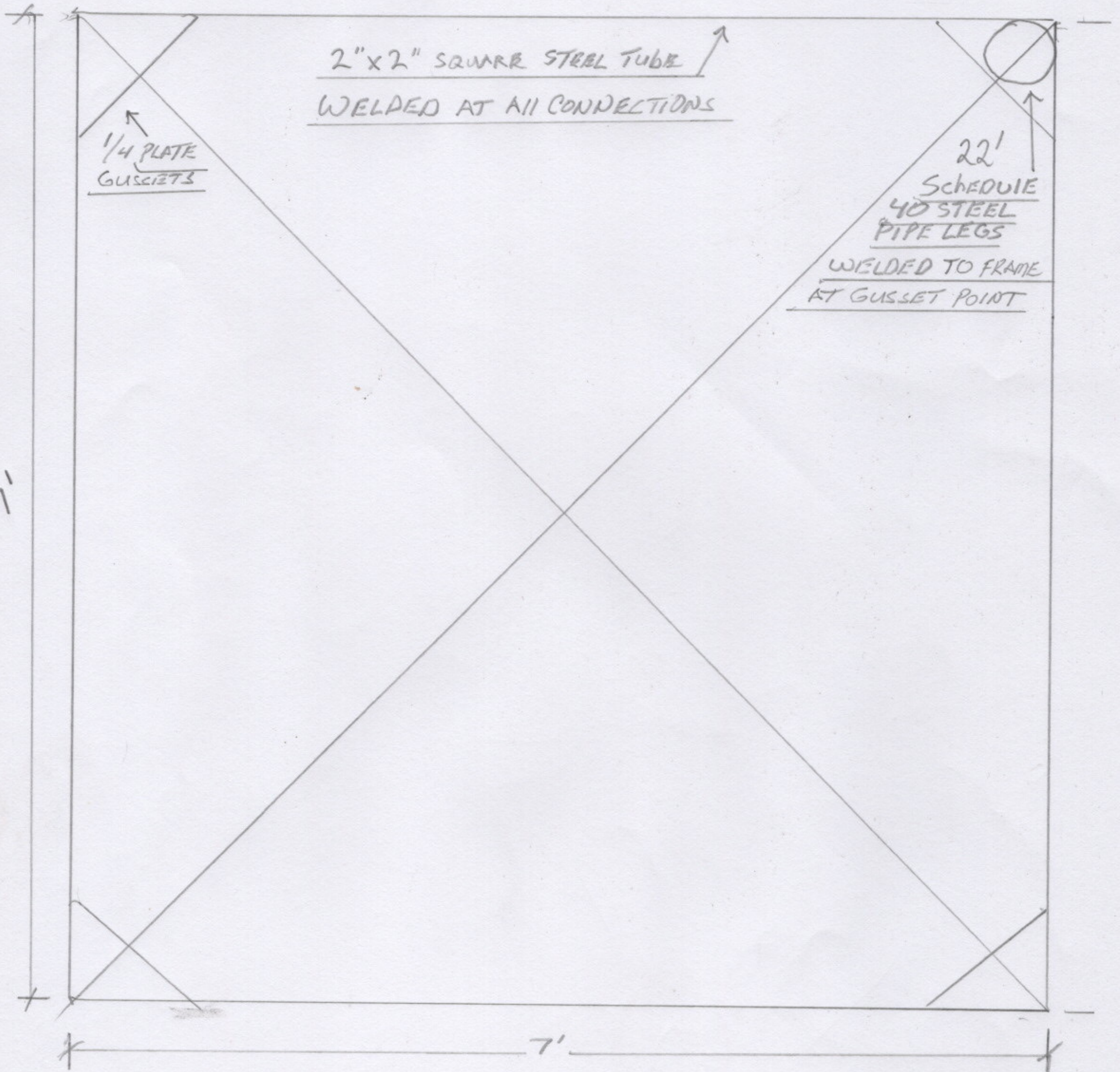


BAT "HOTEL" FRAME

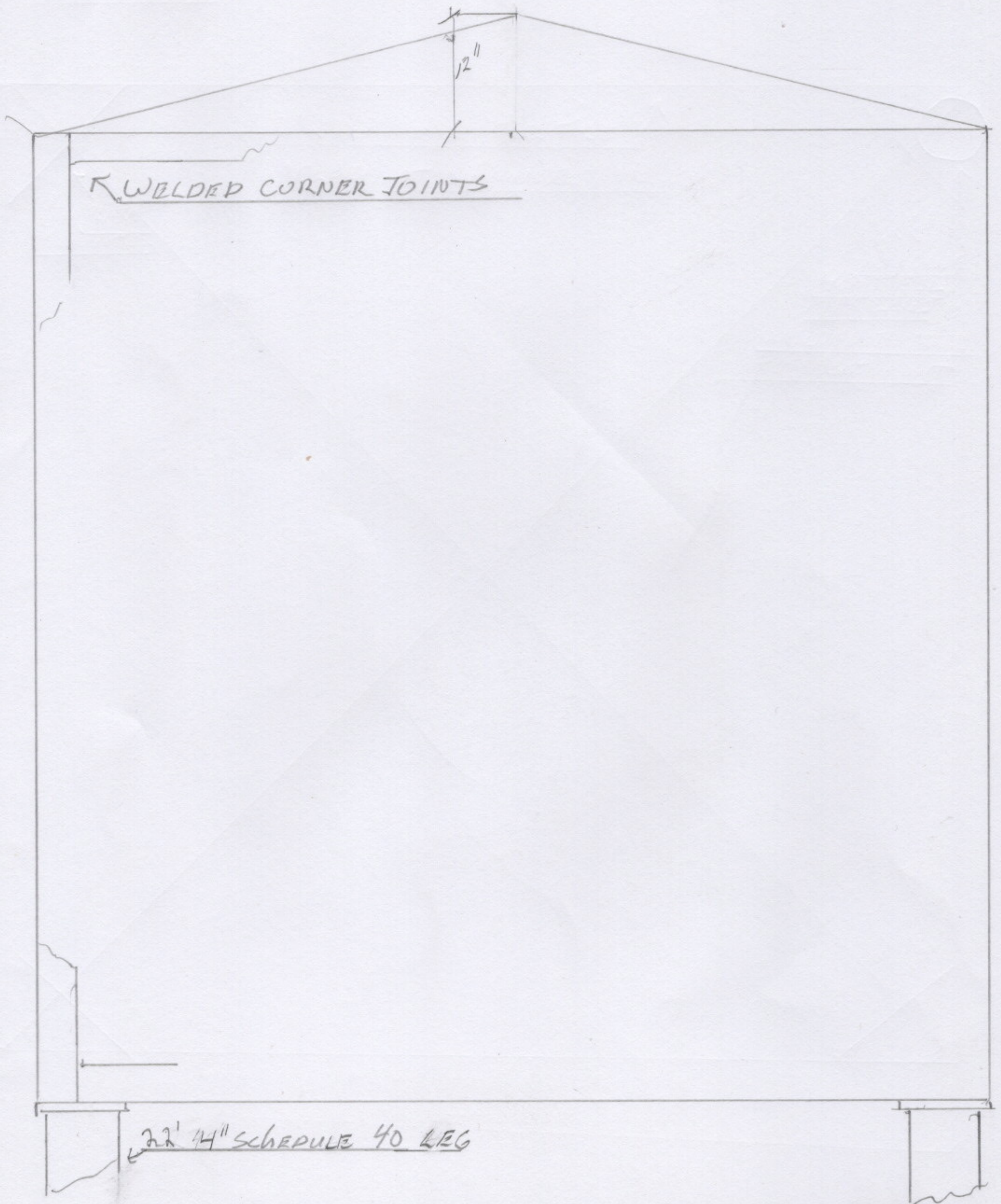
TOP VIEW



2.

BAT "HOTEL" FRAME SIDE VIEW

ALL SIDES EQUAL



3.

BAT HOTEL STRUCTURAL
FOAM PANNEL

FRONT AND BACK VIEW

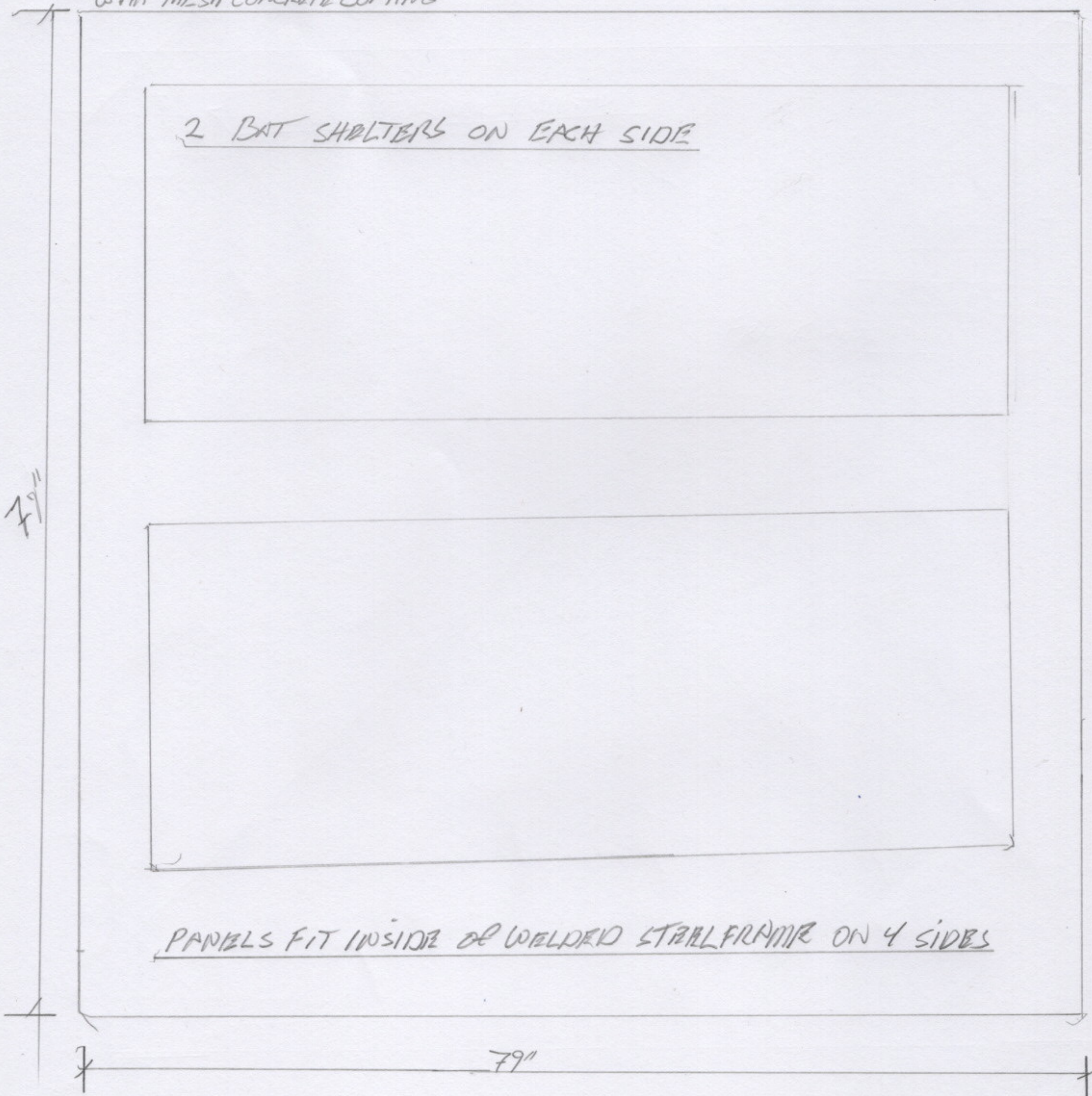
2" STRUCTURAL FOAM
with MESH CONCRETE COATING

2 BAT SHELTERS ON EACH SIDE

79"

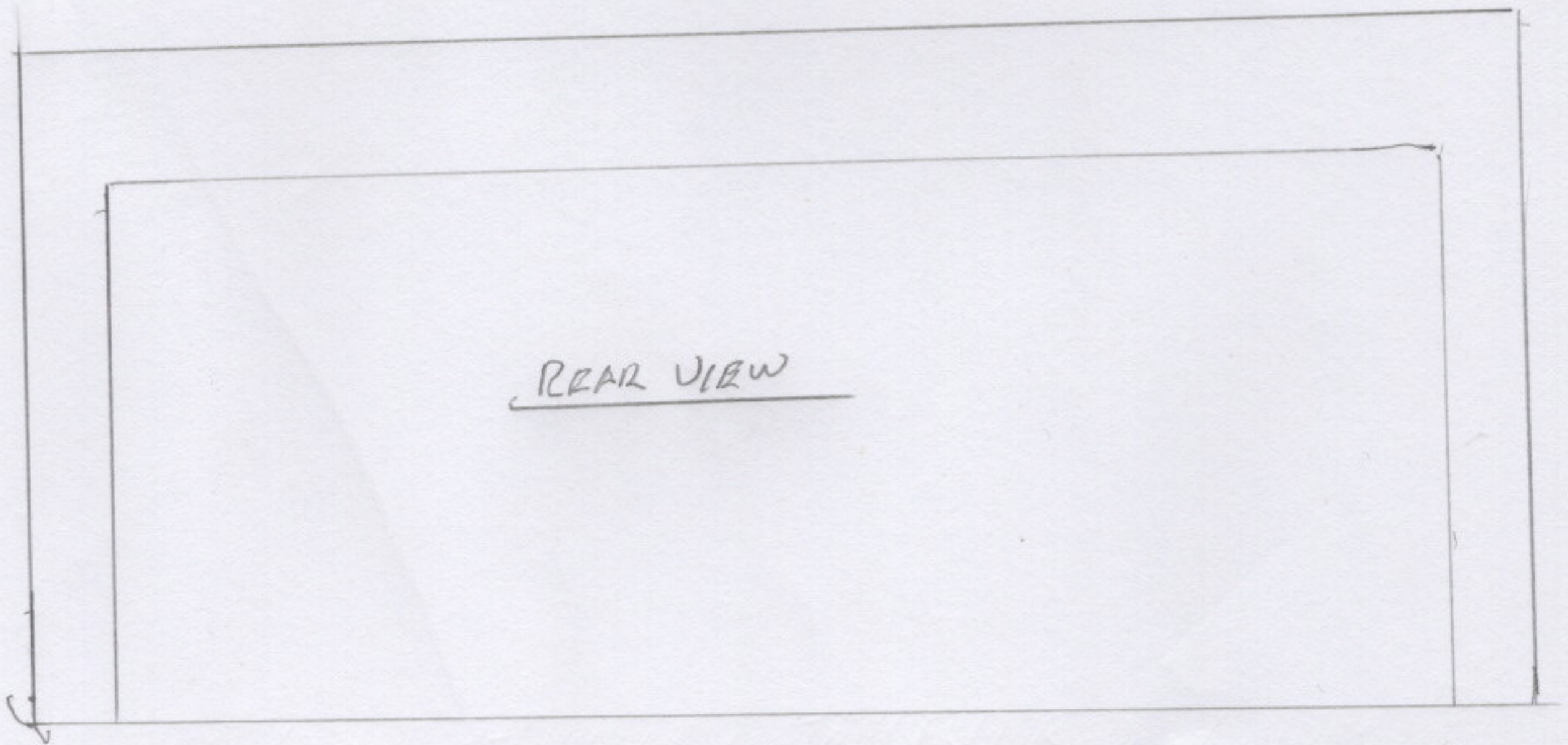
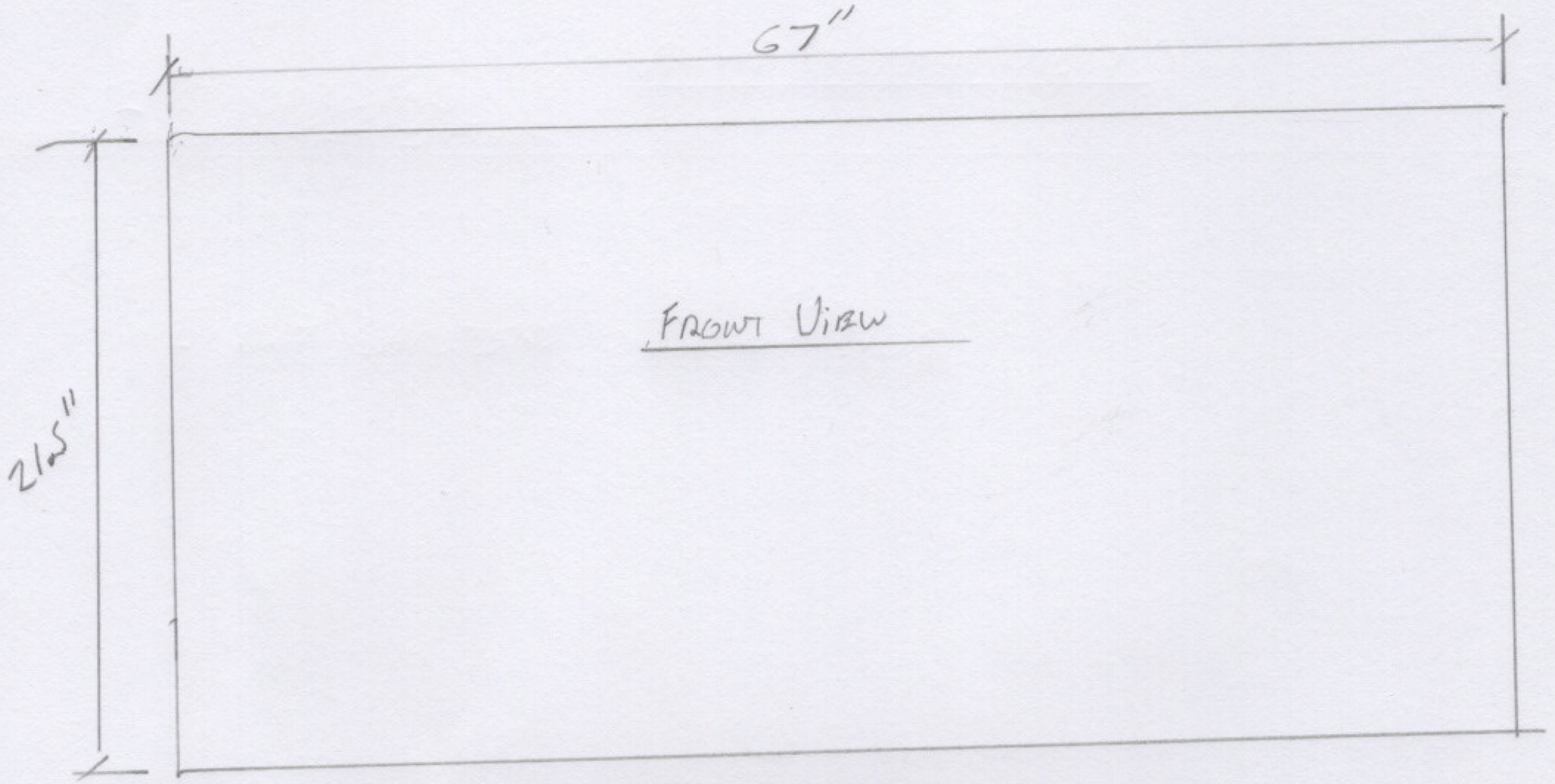
PANNELS FIT INSIDE OF WELDED STEEL FRAME ON 4 SIDES

79"



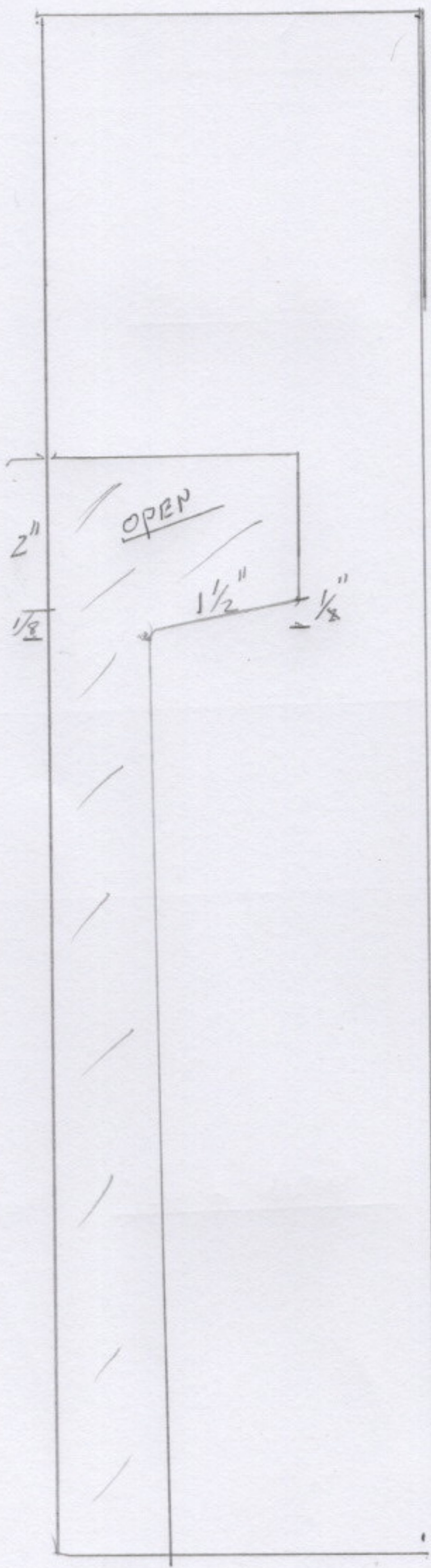
4.

BAT PANELS

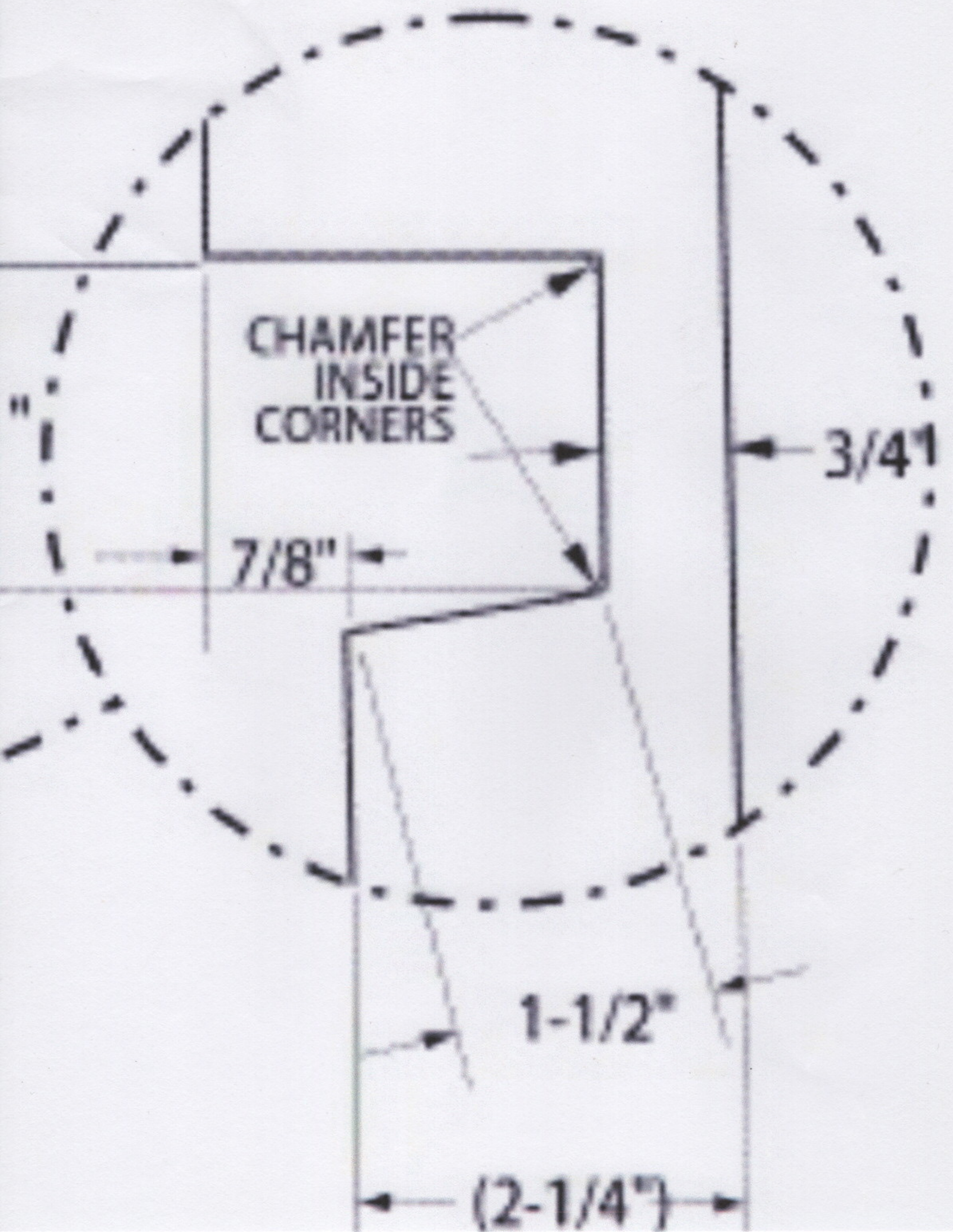


5.

PANEL SIDE VIEW

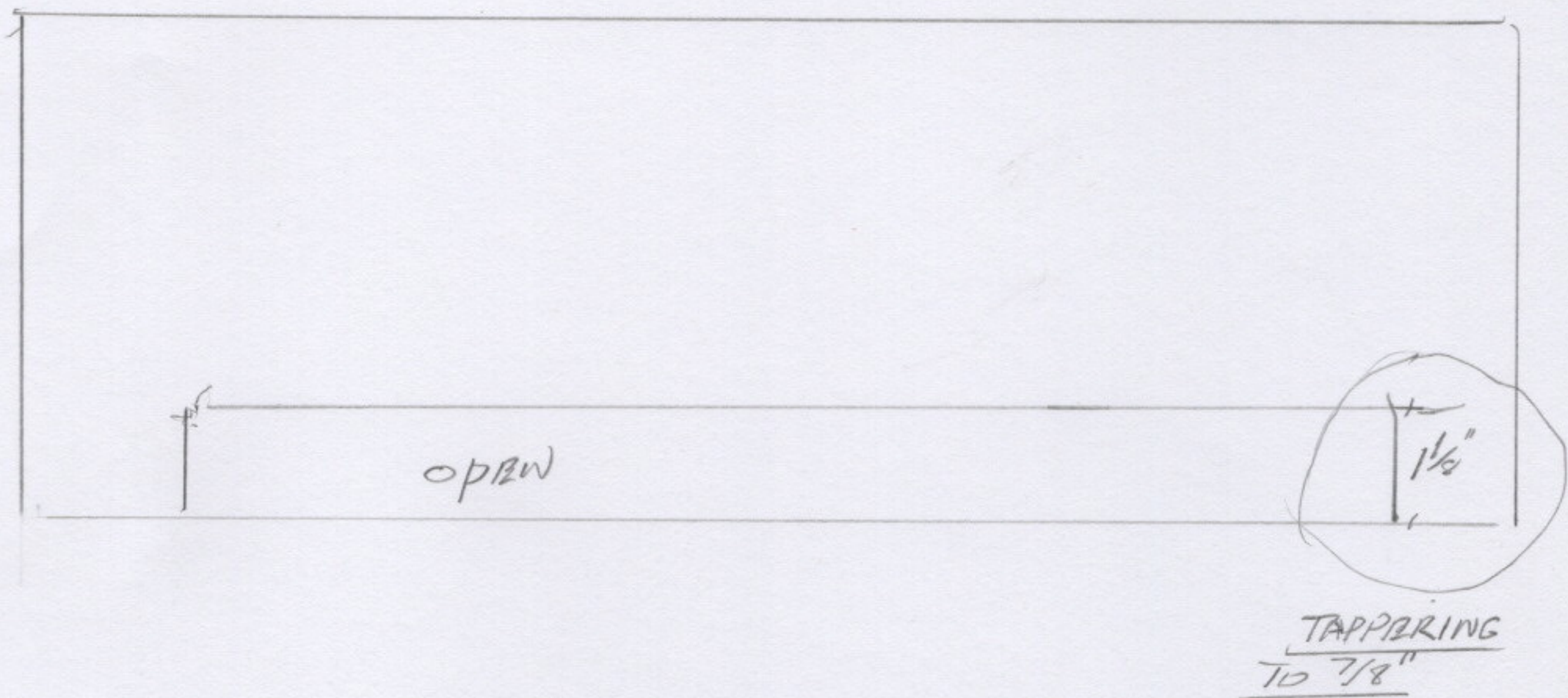


5.5



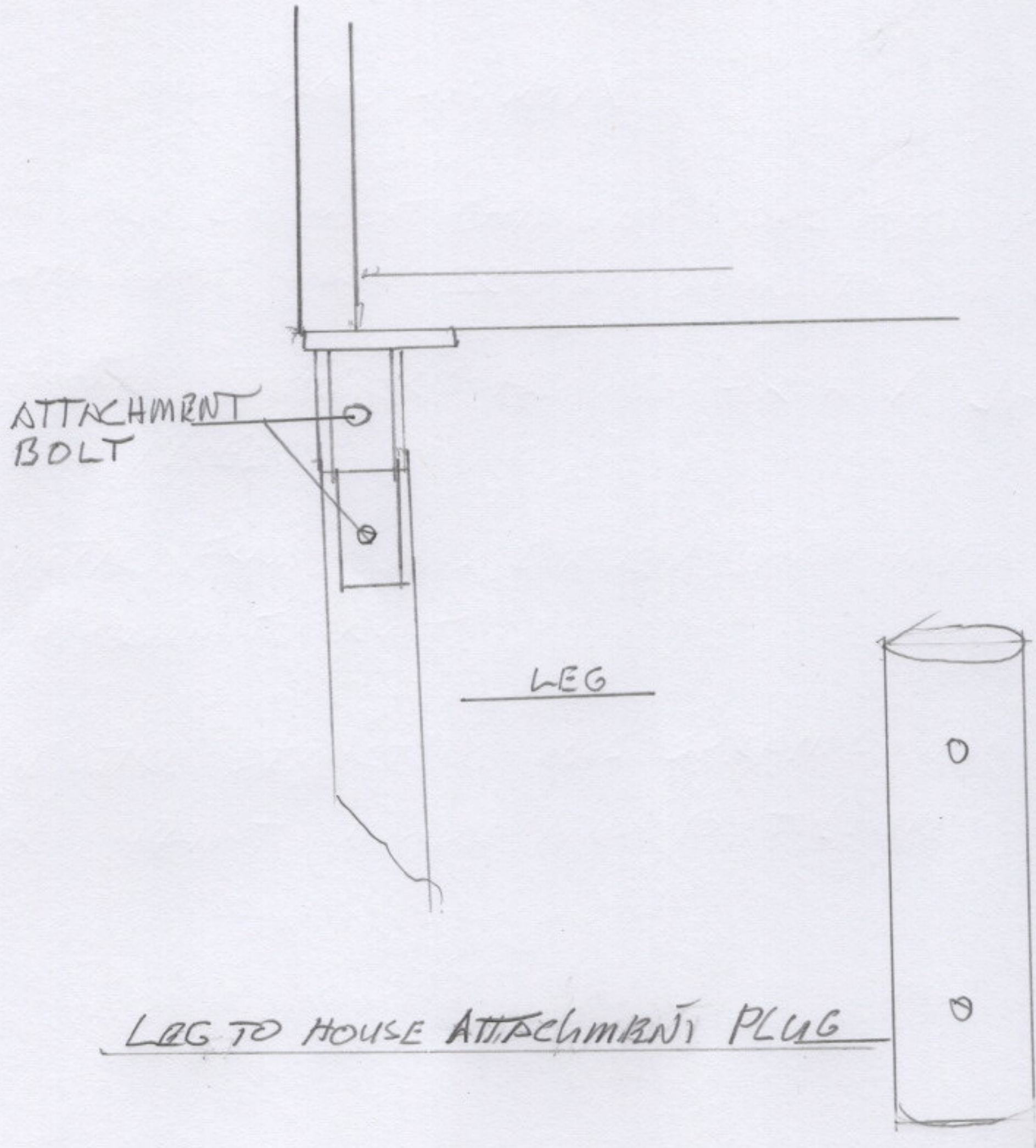
6.

BOTTOM VIEW 100% TO SCALE



17,

HOUSE TO LEGS ATTACHMENT



LEG TO HOUSE ATTACHMENT PLUG

NOTES

1. PANELS ARE BUILT WITH INDUSTRIAL CONSTRUCTION FOAM COATED WITH A NYLON MESH COVERED IN A CEMENT PRODUCT COMMONLY USED FOR EXTERIOR DETAIL STUCCO.
2. LEGS ARE DRILLED AND MAOIZ REBAR INSERTS, THE FOOTINGS WERE 4" DEEP AND 24" SQUARE
3. CONCRETE WAS 3260 LBS MIX
4. ROOF WAS COMPOSIT SHINGLES OVER #30 FELT. THE SHINGLES WERE SCREWED DOWN TO OSB BOARD.
5. THE FRAME STRUCTURE ALLOWED FOR A 4" GAP AT THE TOP FOR AIRFLOW.
6. THE METAL FRAME WAS COATED WITH METAL PRIMER TO HELP PREVENT RUST.
7. THE ENTIRE STRUCTURE WAS SPRAYED WITH EXTERIOR PRIMER / PAINT INSIDE AND OUT. (MINUS LEGS)









